



GMT MONTHLY MEMBERSHIP PROGRESS REPORT

Results as of: 6/30/2024

Multiple District 27

LOCATION: WISCONSIN

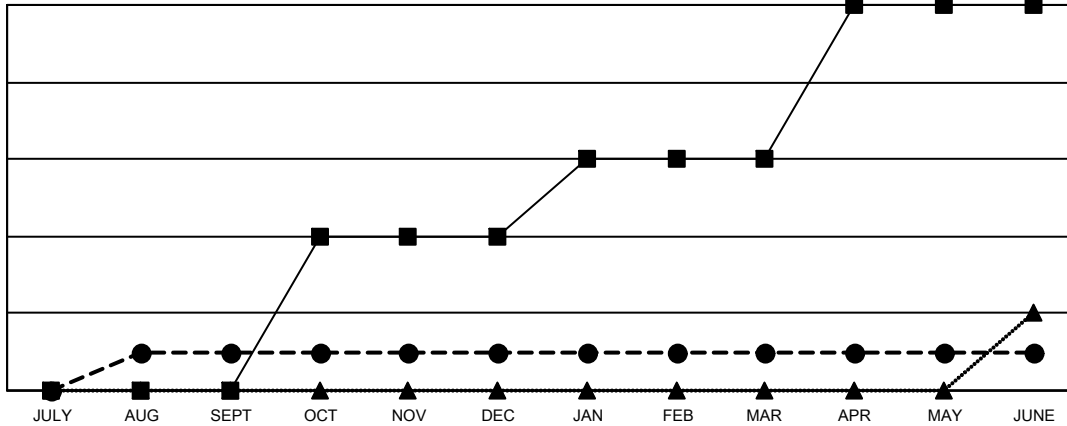
GMT: OPEN

GMT CA 1

Clubs			
RESULTS FOR 2023-2024			
QUARTER	NEW CLUB GOAL	NEW CLUBS	DROPPED CLUBS
JULY/AUG/SEPT	0	1	0
OCT/NOV/DEC	4	0	2
JAN/FEB/MAR	2	0	0
APR/MAY/JUNE	4	0	1

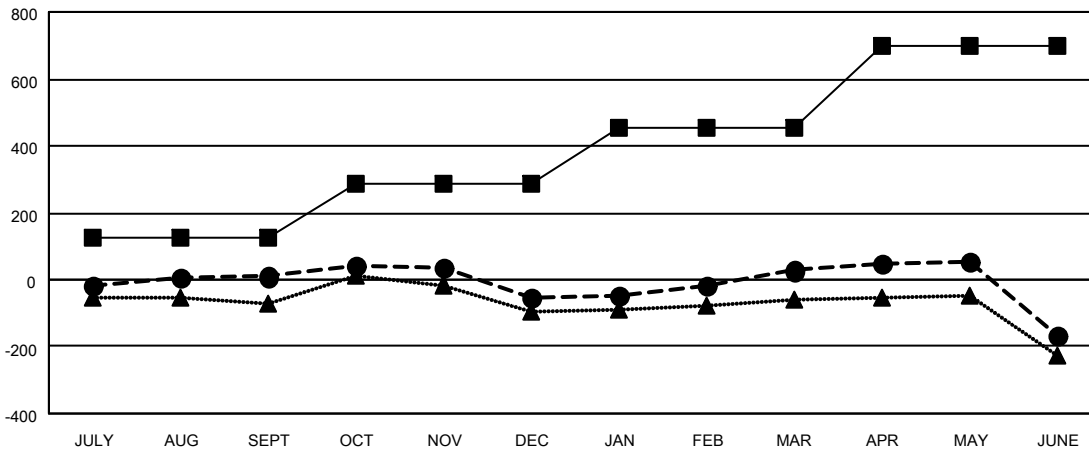
Members			
RESULTS FOR 2023-2024			
QUARTER	MEMBER GROWTH NET GOAL	MEMBER GROWTH ACTUAL	DROPPED MEMBERS ACTUAL (including transfers)
JULY/AUG/SEPT	126	393	356
OCT/NOV/DEC	159	366	391
JAN/FEB/MAR	170	384	272
APR/MAY/JUNE	242	356	516

GOALS AND ACTUAL NEW CLUBS CUMULATIVE



- - CURRENT YEAR GOALS FOR NEW CLUBS
- - CURRENT YEAR ACTUAL NEW CLUBS
- ▲ - LAST YEAR ACTUAL NEW CLUBS

GOALS AND ACTUAL MEMBERS CUMULATIVE



- - MEMBER GROWTH NET GOAL
- - MEMBER GROWTH ACTUAL
- ▲ - LAST YEAR MEMBERSHIP ACTUAL

DROPPED CLUBS: 3	
DROPPED MEMBERS	
DECEASED	235
CLUB CANCELLED	4
OTHER	1,294
TOTAL	1,533

349 CLUBS OF 505 ADDED 1 OR MORE NEW MEMBERS

GENDER DISTRIBUTION	
MALE	11,688 (70.29%)
FEMALE	4,940 (29.71%)

[CLICK HERE FOR CUMULATIVE MEMBERSHIP DATA](#)

TOTAL FAMILY UNIT MEMBERS	3,598
FAMILY MEMBERS PAYING HALF DUES	1,831